

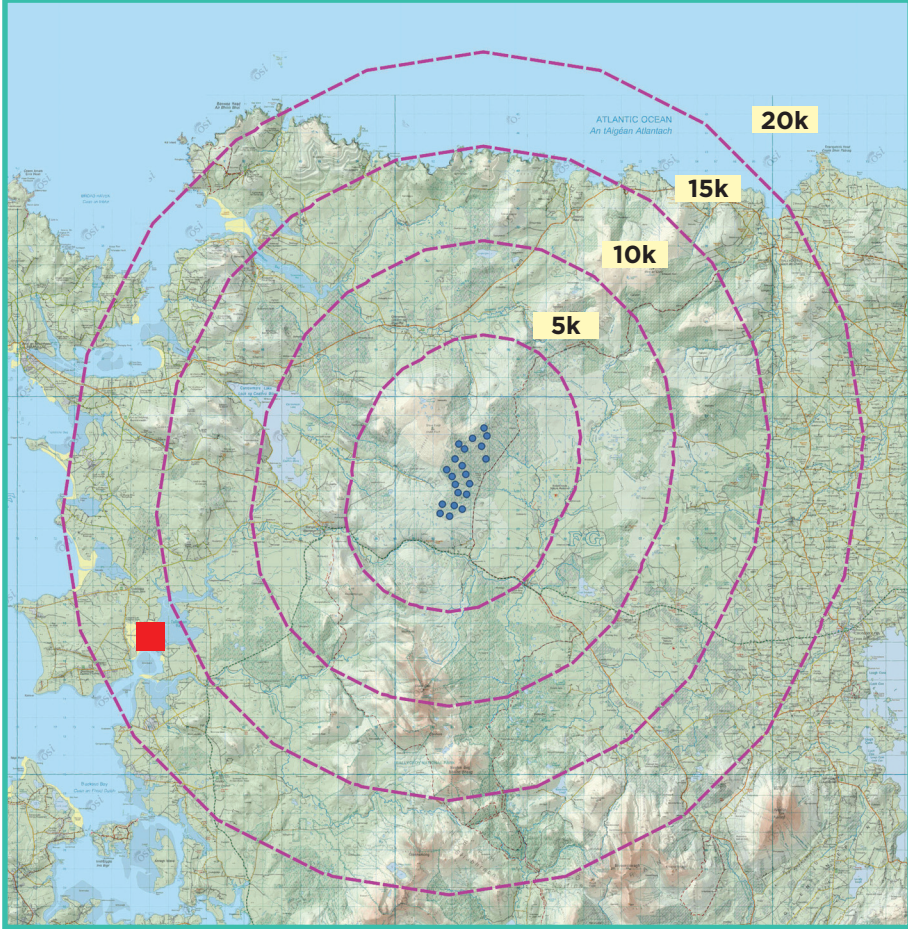
View Point 2

Tullaghanduff

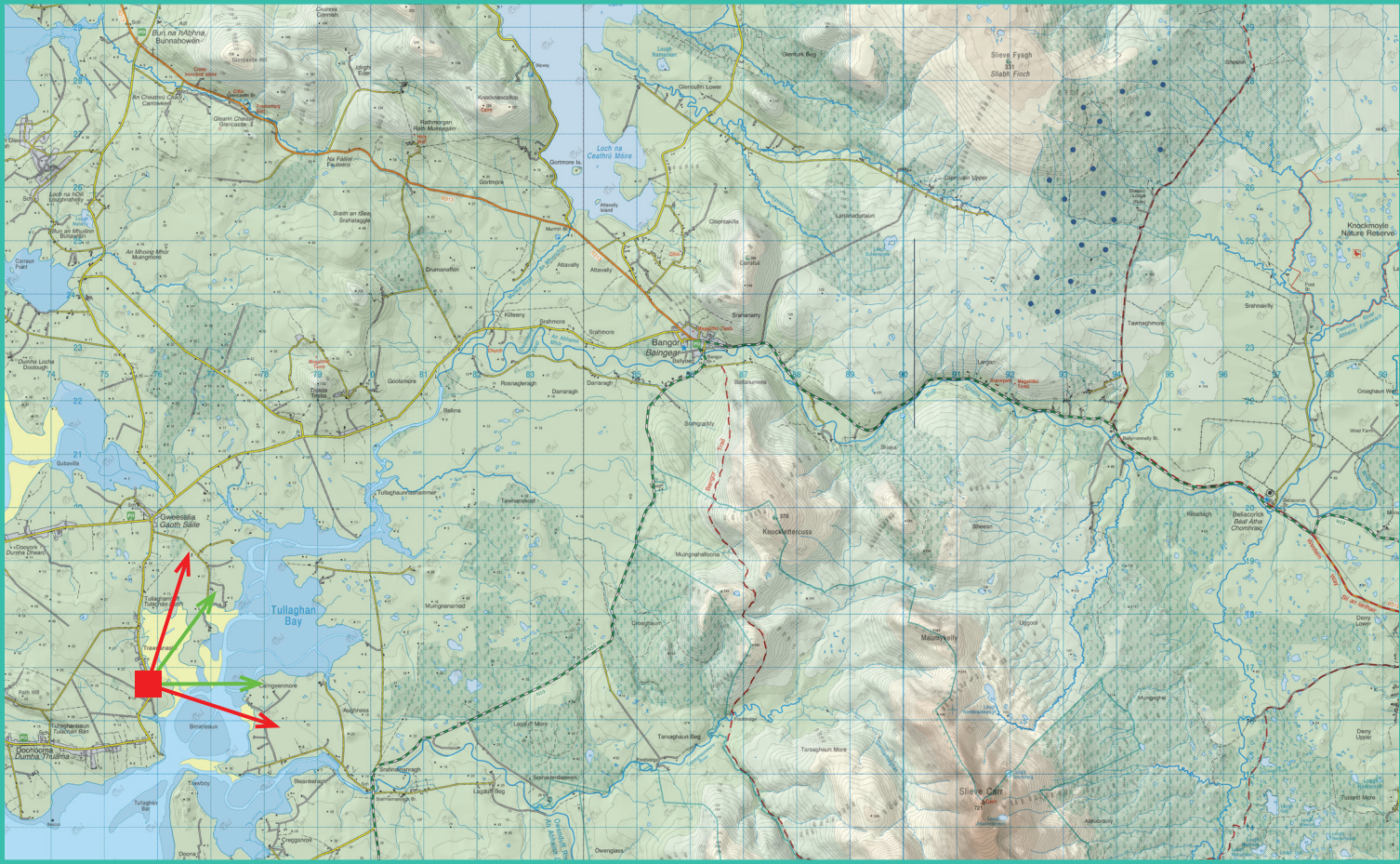
Photomontage 2

View Point: View from a local road, which is also located along the Wild Atlantic Way tourist route, in the townland of Tullaghanduff, approximately 17.9km southwest from the nearest turbine. This viewpoint is located along a Co. Mayo designated scenic route.

View point grid reference	475,893(E); 816,577(N)
Date of image taken	21.7.2021
Time of image taken	11:20am
View point elevation	19m
Angle of Views	90° / 53.5°
View Direction (Image Centre)	63°
Horizontal extent of proposed turbines	10°
Distance to nearest proposed turbine	17.9km (T17)
Number of proposed turbines visible	19/21
Turbine Hub Height	115m
Turbine Tip Height	200m
Turbine Rotor Diameter	170m
Montage Type	Type 4* : Photomontage / Photowire /Survey / Scale Verifiable
Camera & Lens	Canon 5D Mark III / Full Frame Sensor with a 50mm Lens
Tripod	Manfrotto 190X extended to approx 1.5m.
Guidance	* Visual Representation of Development Proposals, Landscape Institute Technical Guidance Note 06/19, 2019
Map Licence	© Ordnance Survey Ireland. All rights reserved. Licence number CYAL50267517



View point relative to 20km radius.



View point relative to wind farm site.



Detail of view point location.

Map Legend

Area shown in 90° view

Area shown in 53.5° view

View Point

Wireframe Legend

Proposed Wind Farm

Permitted Wind Farms

Existing\Operational\Under Construction Wind Farms

Other Proposed Wind Farms

Prepared by

MKO
Planning & Environmental Consultants
Tuam Road, Galway.

Tel: (091) 73 56 11
E-mail: info@mkofireland.ie
Website: www.mkofireland.ie



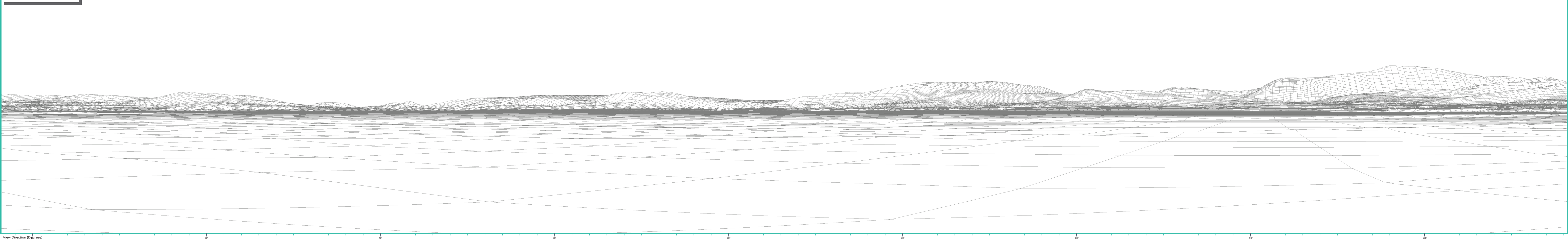
Existing View Image at 120°

90° View Extent

53.5° View Extent



Matching Wireframe

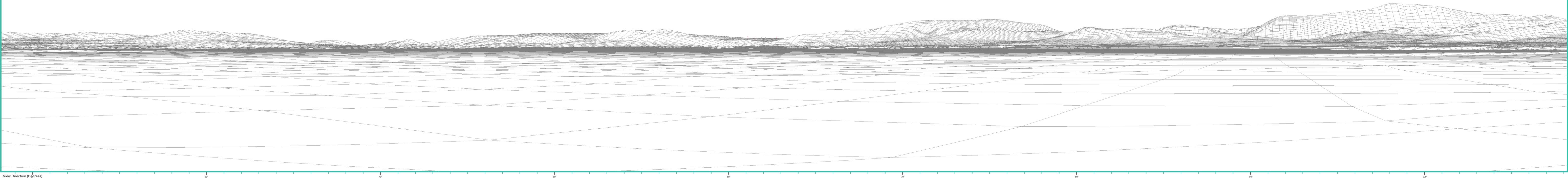


Do Nothing at 90°



Matching Wireframe

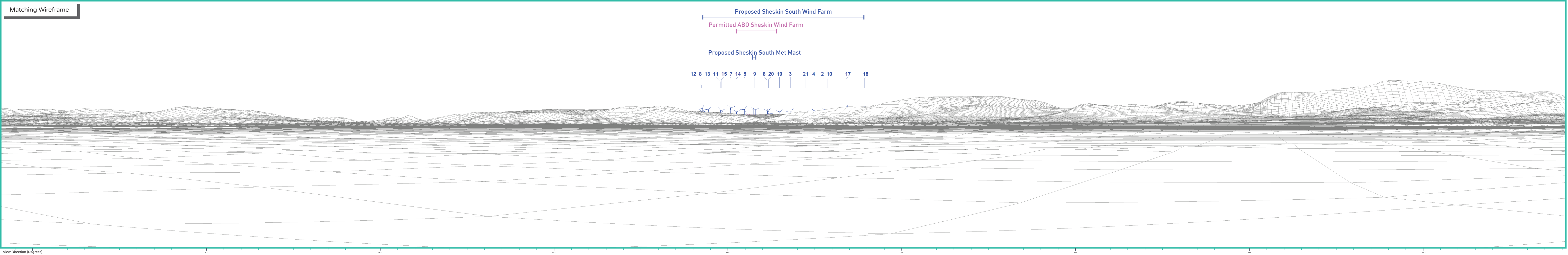
Permitted ABO Sheskin Wind Farm



Proposed Photomontage with Cumulative at 90°



Matching Wireframe





Matching Wireframe

